

Fecha Informe: 15-04-2020

BATERIA POZOS CURIMÓN

Volumen Otorgado (m ³ /año):	73.309.571
Caudal Otorgado (l/s):	2.383

BATERIA POZOS PANQUEHUE

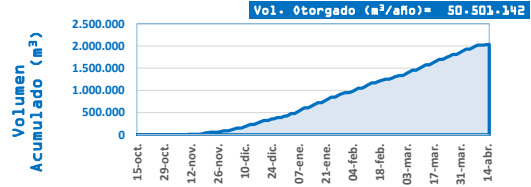
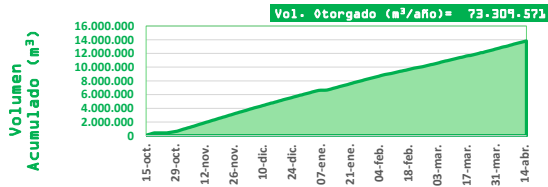
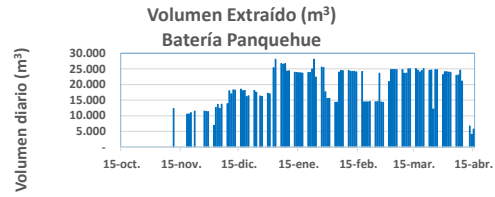
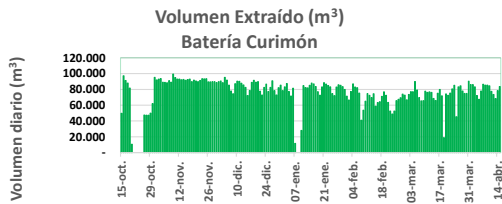
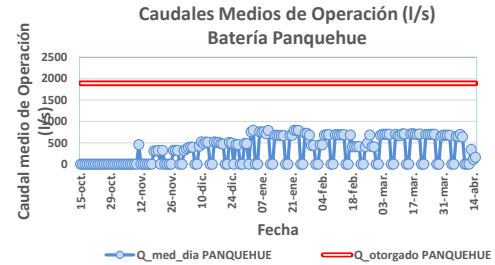
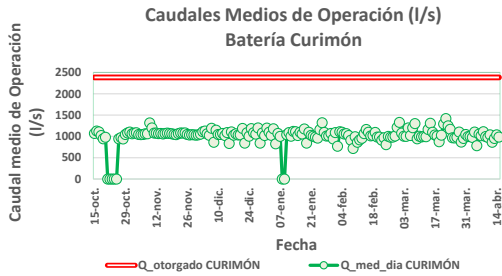
Volumen Otorgado (m ³ /año):	50.501.142
Caudal Otorgado (l/s):	1.892

ÚLTIMOS 3 DÍAS

Fecha	Caudal medio de operación (l/s)	Volumen diario (m ³)	Volumen acumulado (m ³)
13-abr	952	68.428	13.656.704
14-abr	1.037	78.301	13.735.005
15-abr	984	83.596	13.818.602

ÚLTIMOS 3 DÍAS

Fecha	Caudal medio de operación (l/s)	Volumen diario (m ³)	Volumen acumulado (m ³)
13-abr	344	6.697	2.027.343
14-abr	115	4.043	2.031.386
15-abr	162	5.708	2.037.094



Fecha	Caudal medio de operación (l/s)	Volumen diario (m ³)	Volumen acumulado (m ³)
15-oct	1.070	49.808	49.808
16-oct	1.126	97.287	147.095
17-oct	1.105	91.278	238.373
18-oct	1.020	88.111	326.483
19-oct	944	81.579	408.062
20-oct	981	10.594	418.656
21-oct	-	-	418.656
22-oct	-	-	418.656
23-oct	-	-	418.656
24-oct	-	-	418.656
25-oct	-	-	418.656
26-oct	945	47.633	466.289
27-oct	974	47.342	513.631
28-oct	940	47.361	560.992
29-oct	1.044	49.887	610.878
30-oct	1.081	61.919	672.797
31-oct	1.102	95.247	768.044
01-nov	1.064	91.886	859.931
02-nov	1.076	93.001	952.932
03-nov	1.085	93.770	1.046.702
04-nov	1.044	89.155	1.135.857
05-nov	1.041	88.880	1.224.736
06-nov	1.045	88.441	1.313.177
07-nov	1.061	90.976	1.404.154
08-nov	1.062	89.012	1.493.166
09-nov	1.319	99.291	1.592.457
10-nov	1.200	95.000	1.687.457
11-nov	1.076	92.984	1.780.440
12-nov	1.077	93.086	1.873.526

Fecha	Caudal medio de operación (l/s)	Volumen diario (m ³)	Volumen acumulado (m ³)
15-oct	-	-	-
16-oct	-	-	-
17-oct	-	-	-
18-oct	-	-	-
19-oct	-	-	-
20-oct	-	-	-
21-oct	-	-	-
22-oct	-	-	-
23-oct	-	-	-
24-oct	-	-	-
25-oct	-	-	-
26-oct	-	-	-
27-oct	-	-	-
28-oct	-	-	-
29-oct	-	-	-
30-oct	-	-	-
31-oct	-	-	-
01-nov	-	-	-
02-nov	-	-	-
03-nov	-	-	-
04-nov	-	-	-
05-nov	-	-	-
06-nov	-	-	-
07-nov	-	-	-
08-nov	-	-	-
09-nov	-	-	-
10-nov	-	-	-
11-nov	459	12.291	12.291
12-nov	-	-	12.291

13-nov	1.067	92.172	1.965.698
14-nov	1.071	92.508	2.058.206
15-nov	1.059	91.524	2.149.730
16-nov	1.069	92.388	2.242.117
17-nov	1.076	92.958	2.335.075
18-nov	1.071	89.819	2.424.894
19-nov	1.061	91.627	2.516.521
20-nov	1.049	90.608	2.607.129
21-nov	1.042	89.709	2.696.838
22-nov	1.064	91.239	2.788.077
23-nov	1.081	93.372	2.881.449
24-nov	1.079	93.226	2.974.675
25-nov	1.083	93.396	3.068.070
26-nov	1.044	89.573	3.157.644
27-nov	1.035	89.433	3.247.076
28-nov	1.040	89.830	3.336.906
29-nov	1.039	89.713	3.426.620
30-nov	1.031	88.745	3.515.365
01-dic	1.039	89.744	3.605.109
02-dic	1.052	90.535	3.695.643
03-dic	1.108	88.507	3.784.151
04-dic	1.128	95.259	3.879.410
05-dic	1.061	91.662	3.971.071
06-dic	1.023	85.372	4.056.443
07-dic	1.191	77.944	4.134.387
08-dic	862	74.503	4.208.890
09-dic	1.146	87.031	4.295.921
10-dic	1.047	90.487	4.386.408
11-dic	1.047	90.183	4.476.590
12-dic	1.071	87.777	4.564.368
13-dic	1.023	85.704	4.650.072
14-dic	1.088	82.636	4.732.708
15-dic	835	72.179	4.804.887
16-dic	1.105	78.500	4.883.387
17-dic	1.030	88.949	4.972.336
18-dic	1.060	91.601	5.063.937
19-dic	1.032	89.139	5.153.076
20-dic	1.038	89.675	5.242.750
21-dic	1.188	77.789	5.320.539
22-dic	845	72.982	5.393.521
23-dic	1.086	82.463	5.475.984
24-dic	1.003	86.659	5.562.643
25-dic	1.182	77.397	5.640.041
26-dic	1.087	82.521	5.722.561
27-dic	1.052	90.884	5.813.445
28-dic	1.198	78.420	5.891.865
29-dic	844	72.913	5.964.778
30-dic	1.080	82.020	6.046.797
31-dic	1.020	85.493	6.132.290
01-ene	1.196	78.296	6.210.586
02-ene	1.097	83.255	6.293.841
03-ene	1.026	87.335	6.381.175
04-ene	1.180	77.253	6.458.429
05-ene	828	71.513	6.529.942
06-ene	1.071	81.343	6.611.285
07-ene	1.002	11.728	6.623.013
08-ene	-	-	6.623.013
09-ene	-	-	6.623.013
10-ene	1.042	28.129	6.651.141
11-ene	1.092	84.649	6.735.790
12-ene	1.004	82.290	6.818.080
13-ene	1.120	81.936	6.900.016
14-ene	1.111	85.099	6.985.115
15-ene	1.019	88.044	7.073.159
16-ene	1.097	86.880	7.160.039
17-ene	1.056	83.643	7.243.682
18-ene	1.177	77.008	7.320.690
19-ene	842	72.757	7.393.448
20-ene	1.096	83.244	7.476.691
21-ene	1.025	88.534	7.565.225
22-ene	1.005	86.770	7.651.996
23-ene	984	84.996	7.736.991
24-ene	962	83.134	7.820.125
25-ene	1.160	74.768	7.894.894
26-ene	1.319	72.099	7.966.992
27-ene	1.092	82.930	8.049.922
28-ene	1.009	85.889	8.135.811
29-ene	1.012	85.147	8.220.958
30-ene	1.069	83.377	8.304.335
31-ene	938	79.922	8.384.257
01-feb	1.091	71.407	8.455.664
02-feb	771	66.632	8.522.295
03-feb	1.110	77.276	8.599.572

13-nov	-	-	12.291
14-nov	-	-	12.291
15-nov	-	-	12.291
16-nov	-	-	12.291
17-nov	-	-	12.291
18-nov	308	10.530	22.822
19-nov	310	10.599	33.420
20-nov	321	10.965	44.385
21-nov	-	-	44.385
22-nov	325	11.462	55.847
23-nov	-	-	55.847
24-nov	-	-	55.847
25-nov	-	-	55.847
26-nov	-	-	55.847
27-nov	325	11.459	67.306
28-nov	324	11.434	78.740
29-nov	321	11.307	90.048
30-nov	-	-	90.048
01-dic	-	-	90.048
02-dic	321	6.894	96.941
03-dic	358	12.631	109.572
04-dic	386	13.618	123.191
05-dic	400	12.354	135.545
06-dic	398	13.680	149.224
07-dic	-	-	149.224
08-dic	-	-	149.224
09-dic	421	13.851	163.076
10-dic	524	18.017	181.093
11-dic	482	17.001	198.095
12-dic	519	18.293	216.387
13-dic	516	18.208	234.595
14-dic	-	-	234.595
15-dic	-	-	234.595
16-dic	524	18.490	253.086
17-dic	510	18.000	271.085
18-dic	513	18.102	289.188
19-dic	483	16.096	305.284
20-dic	472	16.396	321.679
21-dic	-	-	321.679
22-dic	-	-	321.679
23-dic	511	18.032	339.711
24-dic	495	17.474	357.185
25-dic	-	-	357.185
26-dic	464	16.363	373.548
27-dic	458	16.158	389.706
28-dic	-	-	389.706
29-dic	-	-	389.706
30-dic	487	17.164	406.870
31-dic	482	17.016	423.886
01-ene	-	-	423.886
02-ene	757	25.354	449.239
03-ene	796	28.072	477.312
04-ene	-	-	477.312
05-ene	-	-	477.312
06-ene	757	26.700	504.011
07-ene	752	26.520	530.531
08-ene	756	26.679	557.210
09-ene	713	24.315	581.525
10-ene	789	24.387	605.913
11-ene	-	-	605.913
12-ene	-	-	605.913
13-ene	678	23.923	629.836
14-ene	676	23.856	653.692
15-ene	674	23.775	677.467
16-ene	674	23.775	701.243
17-ene	670	23.638	724.880
18-ene	-	-	724.880
19-ene	-	-	724.880
20-ene	675	23.810	748.691
21-ene	677	23.874	772.565
22-ene	795	24.948	797.513
23-ene	796	28.072	825.585
24-ene	790	22.383	847.968
25-ene	-	-	847.968
26-ene	-	-	847.968
27-ene	725	25.578	873.546
28-ene	721	25.423	898.969
29-ene	682	17.681	916.650
30-ene	440	15.520	932.170
31-ene	442	15.590	947.760
01-feb	-	-	947.760
02-feb	-	-	947.760
03-feb	456	14.318	962.078



04-feb	1.096	86.832	8.686.404
05-feb	1.059	82.895	8.769.299
06-feb	1.067	82.097	8.851.396
07-feb	1.020	75.416	8.926.812
08-feb	911	40.890	8.967.701
09-feb	715	53.580	9.021.281
10-feb	992	64.945	9.086.226
11-feb	863	74.598	9.160.824
12-feb	920	72.531	9.233.355
13-feb	956	69.580	9.302.935
14-feb	1.067	74.434	9.377.368
15-feb	1.164	58.657	9.436.025
16-feb	1.097	63.187	9.499.213
17-feb	1.012	64.335	9.563.547
18-feb	1.022	71.200	9.634.747
19-feb	1.093	76.857	9.711.604
20-feb	984	72.581	9.784.185
21-feb	984	63.539	9.847.724
22-feb	913	52.612	9.900.336
23-feb	970	48.885	9.949.221
24-feb	804	52.554	10.001.775
25-feb	1.001	65.762	10.067.538
26-feb	983	67.505	10.135.043
27-feb	985	69.414	10.204.456
28-feb	1.008	74.052	10.278.509
29-feb	1.212	72.743	10.351.252
01-mar	1.327	66.891	10.418.143
02-mar	1.077	73.675	10.491.817
03-mar	1.003	77.039	10.568.856
04-mar	1.001	76.999	10.645.855
05-mar	1.201	89.966	10.735.820
06-mar	1.020	79.256	10.815.076
07-mar	1.203	69.644	10.884.720
08-mar	1.301	65.578	10.950.298
09-mar	943	65.604	11.015.901
10-mar	1.003	77.784	11.093.686
11-mar	989	76.208	11.169.894
12-mar	995	76.765	11.246.659
13-mar	992	76.302	11.322.961
14-mar	1.165	68.495	11.391.456
15-mar	1.308	65.915	11.457.371
16-mar	1.100	75.210	11.532.580
17-mar	1.033	79.959	11.612.539
18-mar	1.007	71.930	11.684.469
19-mar	874	18.887	11.703.356
20-mar	1.030	74.183	11.777.539
21-mar	1.293	72.526	11.850.065
22-mar	1.418	75.393	11.925.457
23-mar	1.249	80.616	12.006.073
24-mar	1.166	85.234	12.091.306
25-mar	968	45.302	12.136.609
26-mar	964	83.298	12.219.907
27-mar	979	84.551	12.304.458
28-mar	1.102	77.927	12.382.385
29-mar	867	74.926	12.457.311
30-mar	952	74.814	12.532.125
31-mar	1.047	90.487	12.622.612
01-abr	995	85.985	12.708.597
02-abr	997	86.098	12.794.695
03-abr	978	83.200	12.877.895
04-abr	1.104	72.239	12.950.134
05-abr	781	67.487	13.017.621
06-abr	1.052	77.959	13.095.580
07-abr	1.015	86.396	13.181.975
08-abr	1.111	85.285	13.267.260
09-abr	996	85.376	13.352.636
10-abr	977	84.430	13.437.066
11-abr	1.036	77.547	13.514.613
12-abr	862	73.663	13.588.276
13-abr	952	68.428	13.656.704
14-abr	1.037	78.301	13.735.005
15-abr	984	83.596	13.818.602
16-abr	-	-	13.818.602

04-feb	456	14.325	976.403
05-feb	680	23.976	1.000.379
06-feb	693	24.456	1.024.835
07-feb	691	24.389	1.049.224
08-feb	-	-	1.049.224
09-feb	-	-	1.049.224
10-feb	695	24.527	1.073.751
11-feb	688	24.259	1.098.010
12-feb	686	24.209	1.122.219
13-feb	688	24.255	1.146.474
14-feb	694	24.051	1.170.524
15-feb	-	-	1.170.524
16-feb	-	-	1.170.524
17-feb	685	24.163	1.194.688
18-feb	410	14.479	1.209.167
19-feb	410	14.454	1.223.621
20-feb	409	14.433	1.238.054
21-feb	412	14.549	1.252.603
22-feb	-	-	1.252.603
23-feb	-	-	1.252.603
24-feb	410	14.461	1.267.065
25-feb	498	14.553	1.281.618
26-feb	686	23.587	1.305.205
27-feb	409	14.422	1.319.627
28-feb	406	14.306	1.333.933
29-feb	-	-	1.333.933
01-mar	-	-	1.333.933
02-mar	681	20.906	1.354.840
03-mar	703	24.784	1.379.624
04-mar	703	24.784	1.404.408
05-mar	703	24.798	1.429.206
06-mar	701	24.742	1.453.948
07-mar	-	-	1.453.948
08-mar	-	-	1.453.948
09-mar	701	24.728	1.478.676
10-mar	668	23.564	1.502.239
11-mar	670	23.638	1.525.877
12-mar	709	24.999	1.550.876
13-mar	709	25.014	1.575.890
14-mar	-	-	1.575.890
15-mar	-	-	1.575.890
16-mar	710	25.052	1.600.942
17-mar	715	24.563	1.625.505
18-mar	702	24.011	1.649.516
19-mar	693	24.449	1.673.965
20-mar	710	25.063	1.699.028
21-mar	-	-	1.699.028
22-mar	-	-	1.699.028
23-mar	696	24.551	1.723.579
24-mar	698	24.625	1.748.205
25-mar	701	12.110	1.760.315
26-mar	701	24.735	1.785.049
27-mar	701	24.724	1.809.774
28-mar	-	-	1.809.774
29-mar	-	-	1.809.774
30-mar	655	23.115	1.832.889
31-mar	682	24.064	1.856.954
01-abr	682	24.068	1.881.022
02-abr	680	23.994	1.905.016
03-abr	678	23.934	1.928.949
04-abr	-	-	1.928.949
05-abr	-	-	1.928.949
06-abr	650	22.918	1.951.867
07-abr	653	23.052	1.974.919
08-abr	697	24.604	1.999.524
09-abr	642	21.122	2.020.646
10-abr	-	-	2.020.646
11-abr	-	-	2.020.646
12-abr	-	-	2.020.646
13-abr	344	6.697	2.027.343
14-abr	115	4.043	2.031.386
15-abr	162	5.708	2.037.094
16-abr	-	-	2.037.094